

Industrial HiVision 8.0

Industrial Network Management Software

Improve productivity, security and network uptime using Hirschmann's Industrial HiVision to configure and monitor industrial Ethernet networks. Plus, you can supervise any SNMP-enabled products.

- +** Obtain **instant visibility of key performance indicators** with the Network Dashboard.
- +** Find faults quickly and achieve timely remediation that **improves uptime and security**.
- +** Easily **identify, map and configure all network infrastructure**, including SNMP-enabled devices from any manufacturer with MultiConfig, even during live operation.
- +** Download a **free version** of the software for your unlimited use to **experience the benefits before you buy**.

Key Features

- Setup wizard makes implementation and configuration easy
- Distributed network management with hierarchical master/slave stations
- Configuration Signature Check monitors changes to device configuration files
- Configuration File-Compare function highlights specific configuration changes
- Auto-Scheduled device configuration backup
- PoE wizard to optimize the use of available power
- Customized alerts for unauthorized system changes
- Simple security lockdown feature
- User roles for controlled access
- Event history in graphical format
- LDAP or RADIUS user authentication with audit trail of user action history
- VLAN viewer, MIB browser, edit and run mode also available
- Windows and Linux versions available with multiple language support



Industrial HiVision

Product:

Order code:

Registration code:

Product Certificate
This product certificate entitles you to acquire the license key from the Hirschmann web site www.hivision.de/license

Produktzertifikat
Dieses Produktzertifikat berechtigt Sie zum Erwerb des Lizenzschlüssels von der Hirschmann-Webseite www.hivision.de/license

Contact / Kontakt
<https://www.hirschmann-support.com>
Technical questions / technische Fragen
mailto:www.hirschmann.com (Home Page)
<http://www.hivision.de>
Hirschmann Network Management



Industrial HiVision is a proven solution that saves you time, reduces errors and provides a snapshot of network health that increases availability, better utilizes power and enhances security.

Be certain.
Belden.

Your Benefits

Support System Monitoring Needs – Both Now and in the Future

Ethernet networks are growing and changing quickly, and it is increasingly difficult to manage and secure them. Industrial HiVision was designed for automation networks and has been field-tested at thousands of facilities.

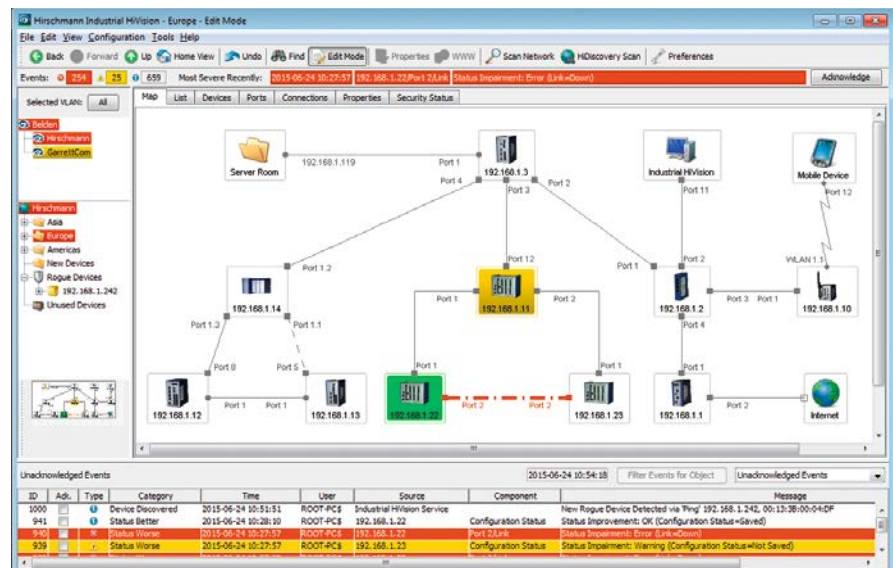
Industrial HiVision integrates all SNMP-enabled devices such as switches, PLCs, I/O modules and HMI panels from multiple vendors into a single network management application. The network topology is recognized automatically with all network nodes and links accurately displayed on screen, including any unmanaged switches and hubs.

The Network Dashboard displays key performance indicators such as devices with warning and error statuses, security information and the top 10 worst performing devices based on response times. You can add or remove widgets from the dashboard to display your most critical indicators, making it easy to identify problems and take corrective or preventative measures.

Using the enhanced MultiConfig feature, you can simultaneously configure hundreds of devices, including SNMP-enabled devices from any vendor, even while they are in operation. This not only saves time, but also reduces errors and ensures consistent configuration of the network.

Correlating a text-based event log when fault finding is time consuming. With the Graphical History Display, you get a comprehensive, but useable, overview of which events occurred, leading to a faster response. This easy-to-use graphical interface also allows you to configure TSN-ready networks on per-port level across multiple devices simultaneously.

Hirschmann Industrial HiVision – Europe – Edit Mode



Industrial HiVision safely and automatically identifies network devices and helps you configure and monitor them. The result is all-around network protection and high-performance network management, while making engineering teams more efficient.

You can see just how powerful this software is by using a fully functional, free-of-charge 16 node version for as long as you like.

Download it today from www.hivision.de When it's time to deploy, know that only the server application is licensed. The client software is free.

Applications

As industrial networks become larger and more complex, it's critical to map and supervise the network devices. Industrial HiVision can be used wherever networks have high availability, power and security requirements. The software requires no special IT knowledge and its wizard guides you systematically through the network management set-up process.

Consider these types of applications:

- Large networks with devices from various third-party manufacturers
- Networks with many parameters per device or manufacturer-specific device parameters
- Networks with growing energy demands and need to manage PoE devices
- Networks in need of precisely transmitting time-sensitive data via TSN technology

Markets

Ideal for use in all settings with industrial networks in need of monitoring. This includes the power and utility, transportation, water/wastewater and factory automation industries. Further application areas include: oil and gas, renewable energy, machine building and mining.



Industrial HiVision

Order No.	Type
943 156-032	Industrial HiVision, 32 nodes
943 156-064	Industrial HiVision, 64 nodes
943 156-128	Industrial HiVision, 128 nodes
943 156-256	Industrial HiVision, 256 nodes
943 156-512	Industrial HiVision, 512 nodes
943 156-124	Industrial HiVision, 1024 nodes
943 156-248	Industrial HiVision, 2048 nodes
943 156-496	Industrial HiVision, 4096 nodes

The Hirschmann Annual Maintenance Plan also is available for cost effective updates. It saves up to 60 percent compared to the purchase of one-time updates.

Annual Maintenance Plan

Order No.	Type
942 021-032	Annual Maintenance Plan for Industrial HiVision for 32 nodes
942 021-064	Annual Maintenance Plan for Industrial HiVision for 64 nodes
942 021-128	Annual Maintenance Plan for Industrial HiVision for 128 nodes
942 021-256	Annual Maintenance Plan for Industrial HiVision for 256 nodes
942 021-512	Annual Maintenance Plan for Industrial HiVision for 512 nodes
942 021-124	Annual Maintenance Plan for Industrial HiVision for 1024 nodes
942 021-248	Annual Maintenance Plan for Industrial HiVision for 2048 nodes
942 021-496	Annual Maintenance Plan for Industrial HiVision for 4096 nodes

Belden Competence Center

As the complexity of communication and connectivity solutions has increased, so have the requirements for design, implementation and maintenance of these solutions. For users, acquiring and verifying the latest expert knowledge plays a decisive role in this. As a reliable partner for end-to-end solutions, Belden offers expert consulting, design, technical support, as well as technology and product training courses, from a single source: Belden Competence Center. In addition, we offer you the right qualification for every area of expertise through the world's first certification program for industrial networks. Up-to-date manufacturer's expertise, an international service network and access to external specialists guarantee you the best possible support for products.

Irrespective of the technology you use, you can rely on our full support – from implementation to optimization of every aspect of daily operations.



Always Stay Ahead with Belden

In a highly competitive environment, it is crucial to have reliable partners who add value to your business. When it comes to signal transmissions, Belden is the No. 1 solutions provider. We know your business and want to understand your specific challenges and goals to show how effective signal transmission solutions can push you ahead of the competition. By combining the strengths of our five leading brands, Belden, GarrettCom, Hirschmann, Lumberg Automation and Tofino Security, we are able to offer the integrated solution you need. Today, it may be a single cable, switch or connector, to solve a specific issue; tomorrow, it can be a complex range of integrated applications, systems and solutions. With the rise in smart, connected devices brought on by the Industrial Internet of Things (IIoT), together, we can make sure your infrastructure is ready to handle and make sense of the influx of data. Transform your business now with instant access to information, and make your vision a reality. Visit info.belden.com/iiot to learn more.

About Belden

Belden Inc., a global leader in high quality, end-to-end signal transmission solutions, delivers a comprehensive product portfolio designed to meet the mission-critical network infrastructure needs of industrial, enterprise and broadcast markets. With innovative solutions targeted at reliable and secure transmission of rapidly growing amounts of data, audio and video needed for today's applications, Belden is at the center of the global transformation to a connected world. Founded in 1902, the company is headquartered in St. Louis, USA, and has manufacturing capabilities in North and South America, Europe and Asia.

For more information, visit us at www.belden.com and follow us on Twitter [@BeldenIND](https://twitter.com/BeldenIND).